

Established 1979



Acknowledging Environmental Impact

pandaprint acknowledges the impact our industry has on the environment. We take our responsibility extremely seriously and are committed to maintaining and improving our environmental policy and performance.

Environmental Practices

All paper waste is caged and uplifted periodically by a specialist waste recycling company, enva



All waste chemicals and ink cans from our production processes are uplifted periodically by WasteCare, a specialist waste recycling company.



We hold certificates of membership for all of the above and adhere to all regulations.

FSC® & PEFC

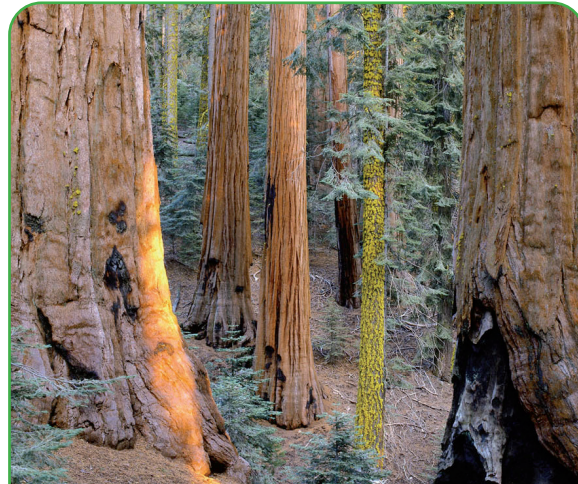
As an environmentally friendly printing company we are pleased to have been awarded FSC® certification (FSC®-C019738). The Forest Stewardship Council® (FSC) is a global not-for-profit organisation that sets the standards for responsibly managed forests, both environmentally and socially.

When timber leaves an FSC® certified forest they ensure companies along the supply chain meet best practice standards, and when a product bears the FSC® logo, you can be sure it's been made from responsible sources. In this way, FSC® certification helps forests remain thriving environments for generations to come, by helping you make ethical and responsible choices.

For more information visit www.fsc-uk.org/en-uk

The FSC® logo on a wood or wood-based product is your/customer's assurance that it is made with, or contains, wood from FSC® certified forests, and it has been responsibly sourced. There are three types of FSC® label: 100%, FSC® Mix or FSC® Recycled.

We can add the FSC® logo to your printed materials depending on the types of paper you choose for your project. Please let us know if this is a requirement when discussing your print jobs with us.



Environmental Policy

pandaprint procures manufactured materials for Commercial Customers, Public Funded Bodies and Charities.

pandaprint recognises that concern for the environment should be an integral and fundamental part of our business operations. As a result we will seek to address all of our environmental issues and promote the continual improvement of our environmental performance.

pandaprint will:

- Promote a sense of responsibility for the environment and ensure that this policy is communicated and implemented at all levels within the workforce.
- Demonstrate a commitment to the prevention of pollution.
- Comply with all relevant local, national and international legislation and codes of practice.
- Minimise material and energy usage wherever feasible.
- Minimise waste and ensure the safe disposal or destruction of waste where reuse or recycling is not viable.
- Support the local economy through purchasing goods locally where possible.
- Encourage active and responsible participation in the achievement of this Policy.
- Regular monitoring of energy consumed and wastes arising will ensure that progress made towards achieving an improvement in environmental performance will be maintained.
- Appropriate resources will continually be made available to ensure the policy is implemented in full.



22029900781
Carbon Capture Company



Woodland is the second largest sink of CO₂ after the oceans? The UK has just 13% woodland cover compared to the European average of 37%.

Environmental issues are becoming more and more important to organisations of all sizes and a carbon reduction strategy often provides a commercial advantage, the Carbon Capture programme goes one step further.

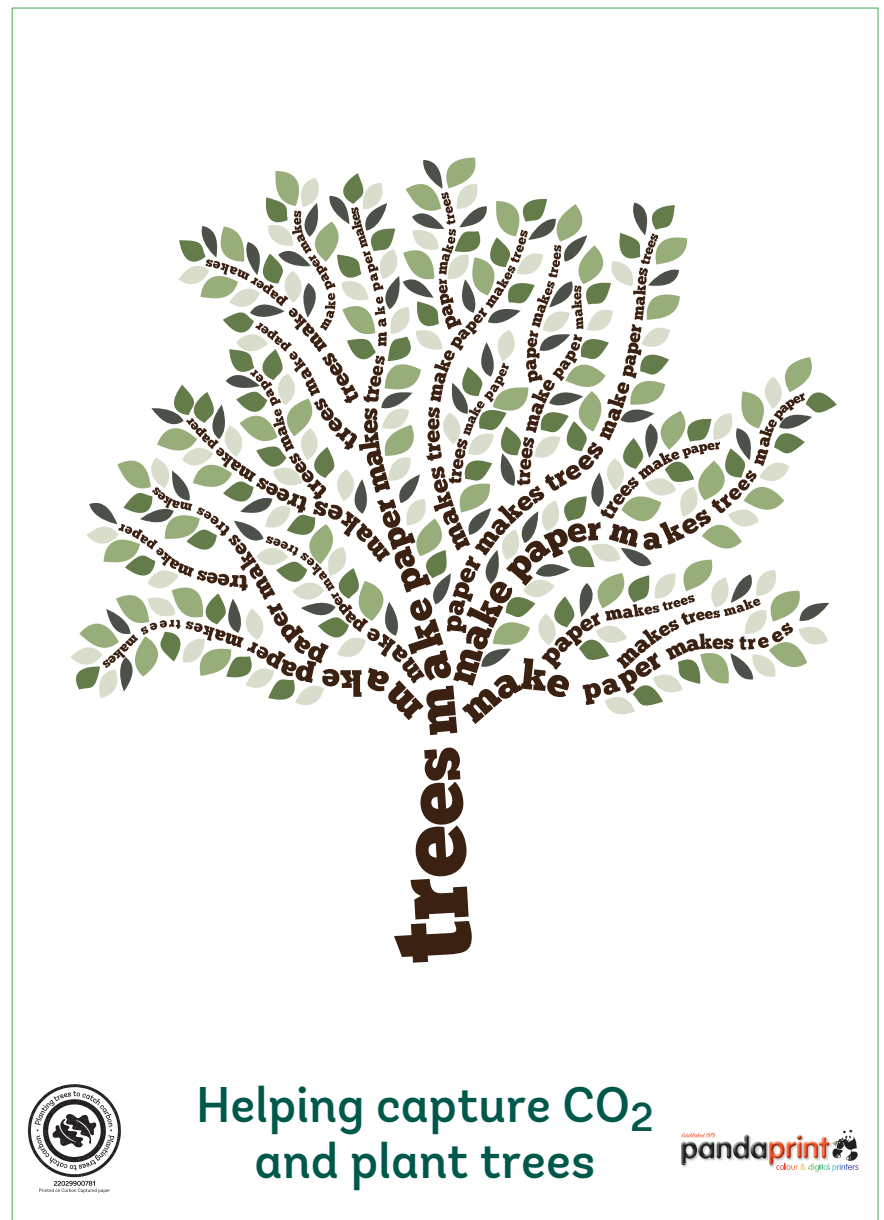
The Carbon Capture programme mitigates the CO₂ emissions from the production and distribution of paper and materials, purchased from Premier and gives customers and their clients the opportunity to join with many major brands and fully engage with, and directly support the work of the Woodland Trust – 100% of the money raised through Carbon Capture goes directly to the Woodland Trust to plant native woodland in the UK.

How does it work?

The average amount of CO₂ emitted from the manufacture and distribution of a tonne of paper has been calculated, this calculation is verified by the Woodland Trust using Carbon Trust and DEFRA figures.

When an organisation elects to Carbon Capture their paper purchases, the amount is shown as a separate line on their invoices. Signing up to Carbon Capture brings many benefits and cause related marketing opportunities such as tree planting events around the UK.

Pandaprint are proud to be part of the Carbon Capture programme.



But we're not finished yet!

WHAT ELSE WE ARE DOING...

We work relentlessly to review our processes and introduce ways to improve on what we print, how we print it and keep our carbon footprint to a minimum.

- LED lighting throughout our factory
- We recycle the majority of our waste streams
- Our house paper is a quality sheet which is chlorine and acid free, recyclable, FSC® certified and Carbon Balanced
- We use vegetable oil based inks
- We conserve water
- Chemical free processing of printing plates
- We work to continually reduce our landfill waste
- Ensure low levels of industrial alcohol used in the print process
- Constantly monitor our energy consumption
- Our energy use is mapped against machine impressions for accurate efficiency assessment
- Journeys are carefully planned for efficiency
- We help our customers to reduce the carbon impacts of their marketing communications and helping them meet their carbon reduction objectives

NO TIME TO WASTE . . .

We are proud of how we organise our waste and consumption of resources and ensure whatever cannot be recycled is either reused, recovered or disposed of responsibly.

A few examples of our innovative recycling streams are:

- Recyclable cardboard packaging and fillers are used as standard and we recycle 100% of our paper off-cuts and overs
- All waste products from chemicals and containers, to ink rags and light bulbs, are disposed of responsibly or recycled by specialist firms.
- Our aluminium plates are melted down and re-used as raw material

